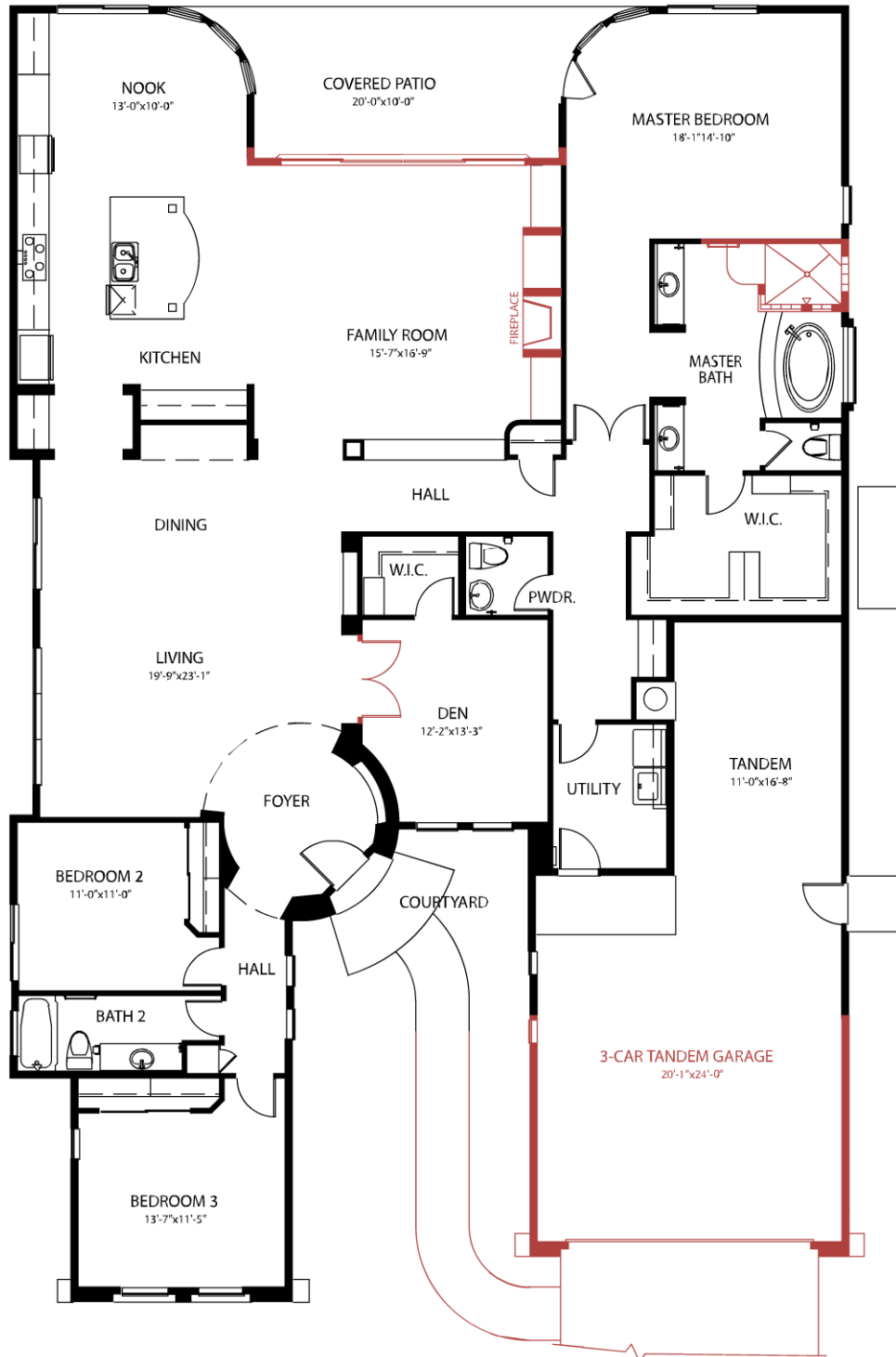


WL 25 - 3524 S. SOBOBA STREET - 4 BED - 2.5 BATH - 3119 SQ.FT. + POOL



The Willows at Power Ranch • Ph. 480-963-3791



In the continuing effort to improve our homes, builder reserves the right to modify the interior and exterior design, specifications, locations, sizes, design features and prices of the homes. Modifications may vary by home and are subject to change without notice. All dimensions and square footages are approximate. No representations of any type are made by this floor plan. Colors shown are approximate representations of actual materials and are not intended to be an exact color match.