

**\$2,950**

3957 E. Beechnut Place  
Chandler, AZ 85249

**FOR LEASE**

**T.W. LEWIS**  
QUALITY  
SINCE  
**1991**



### DESCRIPTION

Spacious home with 4 bedrooms and 3 1/2 baths. Open courtyard that leads to the foyer with views of the formal living and dining room. Granite counter tops, upgraded cabinets and stainless steel appliances await you in the kitchen with a dining nook for the casual eating times. The kitchen opens up to the family room with access to the custom pool and landscaping. Master bedroom features separate sinks and over-sized walk-in closet with built-in shelves and separate exit to pool. One guest room has its own bathroom - perfect for guests or mother-in-law suite.

For video and floor plan, check out our website!

[WWW.TWLEWISLUXURY.COM](http://WWW.TWLEWISLUXURY.COM)

**4 BED | 3.5 BATH | 2,921 sq. ft.**

- Ensuite
- Breakfast nook
- Pool
- Formal living/dining room

### FLOOR PLAN ON BACK

**Christa Cooper**

Designated Broker

CELL 480.888.5272 (call or text)

[christa@twlewis.com](mailto:christa@twlewis.com)



**\$2,950**

3957 E. Beechnut Place  
Chandler, AZ 85249

**FOR LEASE**

**T.W. LEWIS**  
QUALITY  
SINCE  
**1991**

### T.W. Lewis Signature Features +

Attractive sand stucco exterior finish
2" x 6" exterior walls
Granite kitchen countertops
Gourmet kitchen with natural gas cooktop and large kitchen island
Master Suite with luxurious bath
Tile snail shower in master suite (separate from tub)
Larger secondary bedrooms w/extensive closet shelving
Executive height base boards
Wood window sills
Additional natural light due to larger windows
8' interior doors
Softened drywall corners
Wide hallways w/architectural niches
Decora rocker light switches
Alarm system
Natural gas heating

### Exterior -

North/south Exposure
Stone Accent
Courtyard With Wrought Iron Gate
Garage - Single Direct Home Access

### Kitchen -

Stainless Steel Appliances
Built-in Microwave
Gas Stove
Breakfast Countertop Bar
Oversized Island With Shelving And Cabinet Storage
Breakfast Nook
Staggered Height Kitchen Cabinets With Crown Molding

### Interior -

Under-cabinet Kitchen Lighting
Two-tone Interior Paint
Tile Floors
Tile Tub Surrounds
Ceiling Fans
Family Room
10 ft. ceilings
Walk-in Master Closet with built-in Shelving
Pre-plumbed for soft water system
2" Wood Blinds
Wood Shutters
Garage Service Door

### Key Floorplan Features -

Walk-in Master Closet
Built in 2011
Master Bedroom Access to Patio
Family Room
Formal Dining Room
Formal Living Room
Ensuite
Separate Laundry Room
Three-Car Garage

For video and floor plan, check out our website!

**WWW.TWLEWISLUXURY.COM**

### Christa Cooper

Designated Broker  
**CELL 480.888.5272** (call or text)  
[christa@twlewis.com](mailto:christa@twlewis.com)

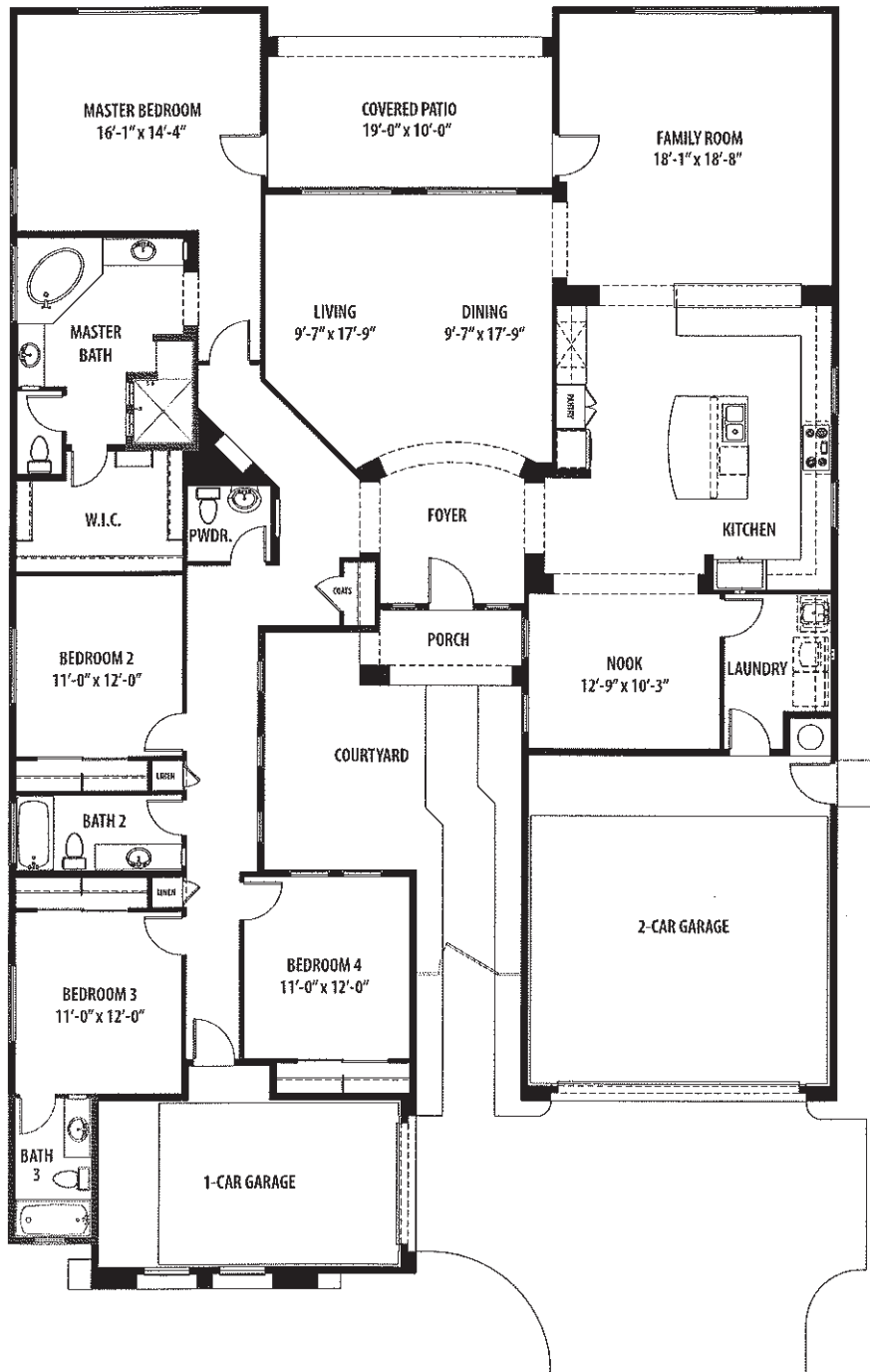


# T.W. LEWIS

200s/300s  
Encina ~ Plan 220

Floor Plan

PA 391 - 3957 E. BEECHNUT PLACE - 4 BED - 3.5 BATH - POOL - 2901 SQ.FT.



Ph.



In the continuing effort to improve our homes, builder reserves the right to modify the interior and exterior design, specifications, locations, sizes, design features and prices of the homes. Modifications may vary by home and are subject to change without notice. All dimensions and square footages are approximate. No representations of any type are made by this floor plan. Colors shown are approximate representations of actual materials and are not intended to be an exact color match.