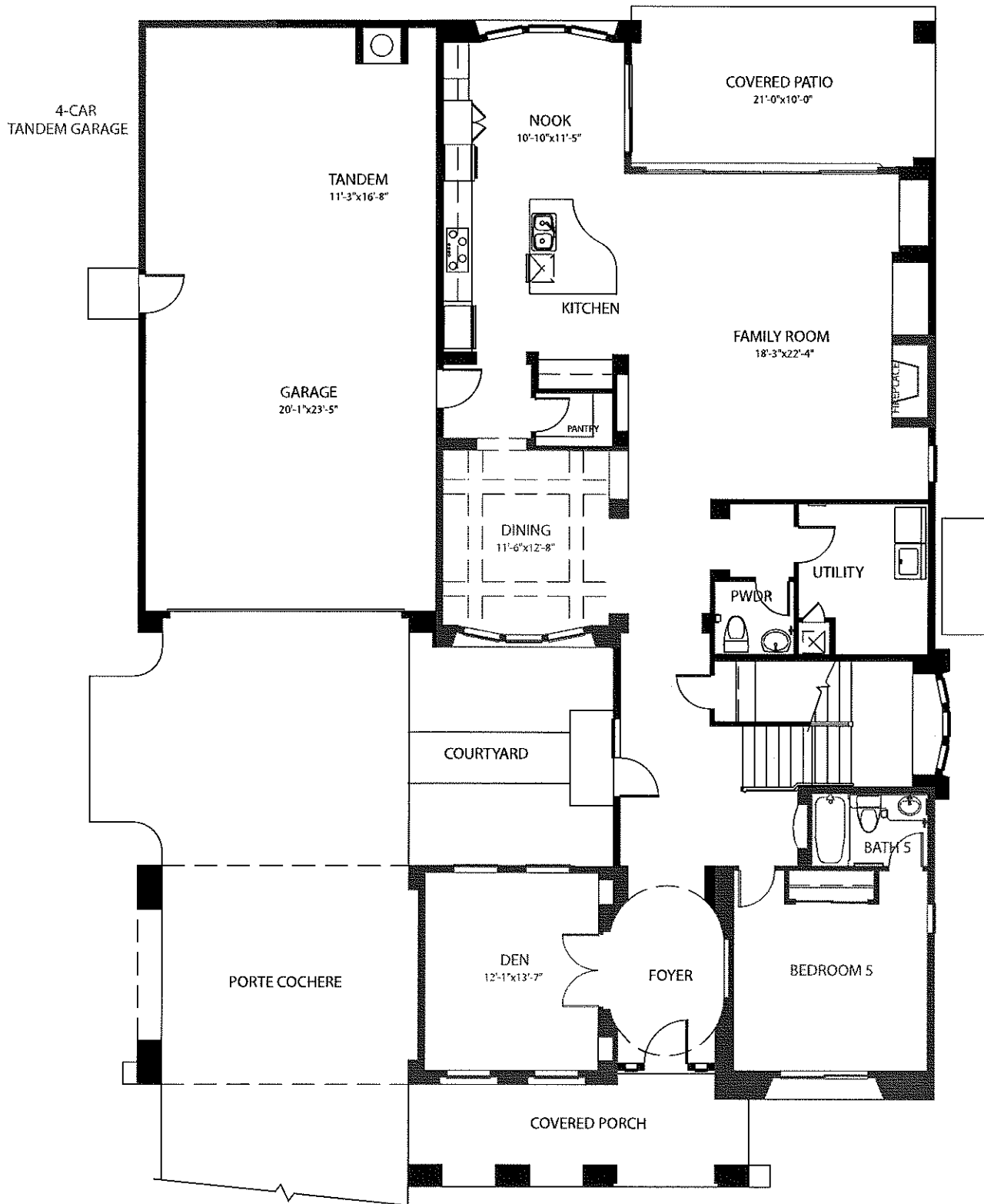
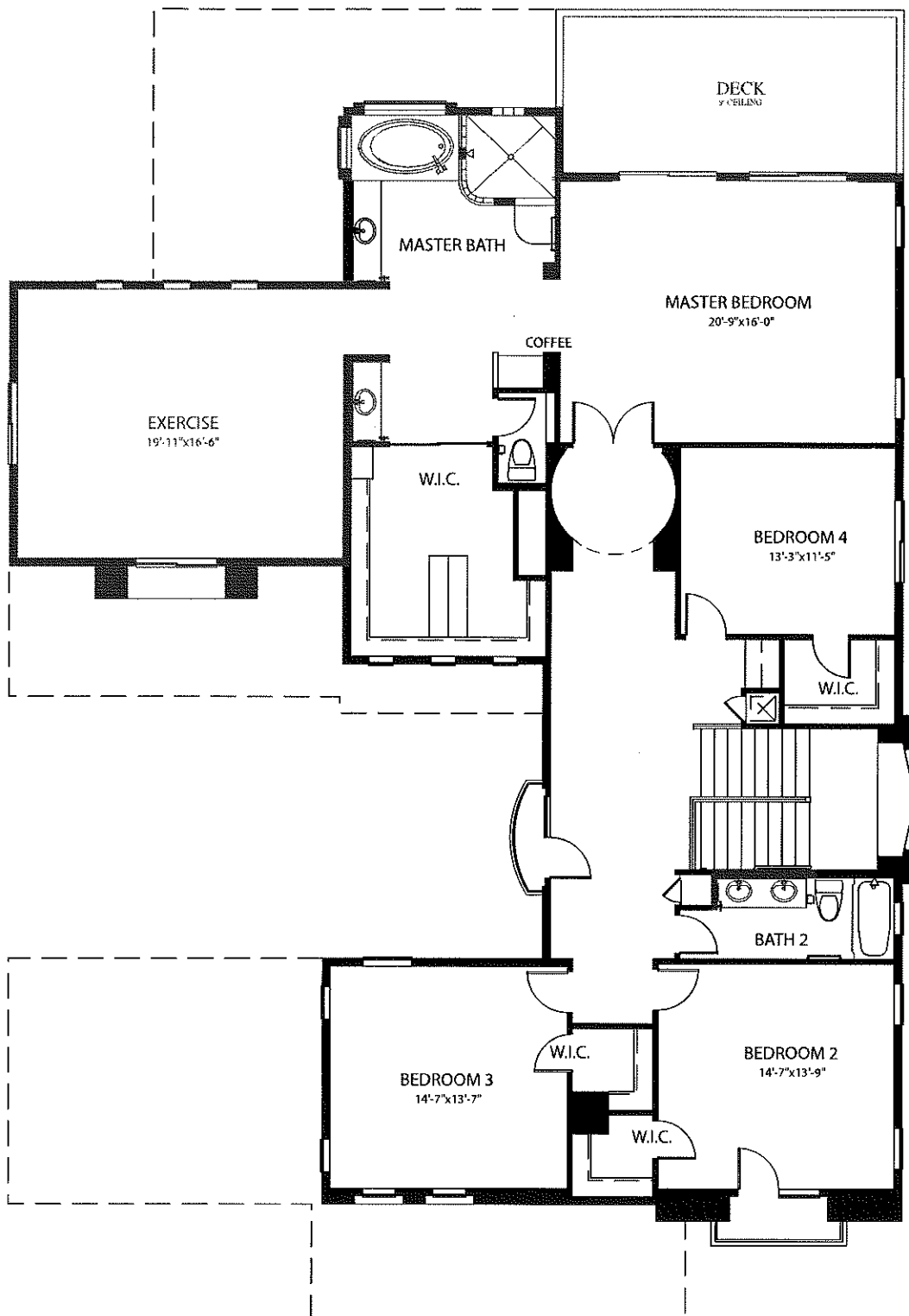


5 beds/3.5 bath + Den + Exercise Room + 4 car tandem garage



Calderra • Ph. 623-414-3966





Calderra • Ph. 623-414-3966



In the continuing effort to improve our homes, builder reserves the right to modify the interior and exterior design, specifications, locations, sizes, design features and prices of the homes. Modifications may vary by home and are subject to change without notice. All dimensions and square footages are approximate. No representations of any type are made by this floor plan. Colors shown are approximate representations of actual materials and are not intended to be an exact color match.