

\$484,900

3524 S. Soboba Street
Gilbert, AZ 85297

FOR SALE

T.W. LEWIS
QUALITY
SINCE
1991



DESCRIPTION

Great T.W. Lewis home featuring 4 bedrooms and 2.5 baths on semi-private lot with a pool. There are no neighbors behind or to the south of the home. This home features a 2 foot extended 3 car tandem garage. Newly landscaped with brand new carpet and pad on the inside. There is 16' sliding glass door at the family room overlooking the pool. There is a snail shower in the master bedroom with separate sinks and large master walk-in closet. The family room features a built-in gas fireplace and is directly off of the kitchen. The kitchen features its own breakfast nook, over-sized kitchen island and extra butler storage with cabinetry. The guest rooms are featured at the front of the home and the living room/dining room features the perfect separation for entertaining.

4 BED | 2.5 BATH | 3,119 sq. ft.

- Family room fireplace
- End corner lot
- Pool
- Formal living/dining

FLOOR PLAN ON BACK

MLS#
For video and floor plan, check out our website!

WWW.TWLEWISLUXURY.COM

Christa Cooper

Designated Broker
CELL 480.888.5272 (call or text)
christa@twlewis.com



\$484,900

3524 S. Soboba Street
Gilbert, AZ 85249

FOR SALE

T.W. LEWIS
QUALITY
SINCE
1991

T.W. Lewis Signature Features +

- Attractive sand stucco exterior finish
- 2" x 6" exterior walls
- Granite kitchen countertops
- Gourmet kitchen with natural gas cooktop and large kitchen island
- Master Suite with luxurious bath
- Tile snail shower in master suite (separate from tub)
- Larger secondary bedrooms w/extensive closet shelving
- Executive height base boards
- Wood window sills
- Additional natural light due to larger windows
- 8' interior doors
- Softened drywall corners
- Wide hallways w/architectural niches
- Upgraded landscape package
- Decora rocker light switches
- Alarm system
- Natural gas heating

Exterior +

- Courtyard With Wrought Iron Gate
- Pool
- No neighbors behind
- Driveway Pavers
- Garage - Extended Length
- Garage - Single Direct Home Access
- Near Open Space
- Community Center

Kitchen -

- Stainless Steel Appliances
- Built-in Microwave
- Gas Stove
- Butler Area
- Breakfast Countertop Bar
- Oversized Island With Shelving And Cabinet Storage
- Breakfast Nook
- Built-in Desk
- Staggered Height Kitchen Cabinets With Crown Molding

Interior -

- Two-tone Interior Paint
- New Carpet
- Tile Floors
- Entry Tile Medallion
- Interior Natural Gas Fireplace
- Tile Tub Surrounds
- Ceiling Fans
- Family Room
- 10 ft. ceilings
- Walk-in Master Closet with built-in Shelving
- Pre-plumbed for soft water system
- 2" Wood Blinds
- Wood Shutters
- Garage Service Door

MLS#

For video and floor plan, check out our website!

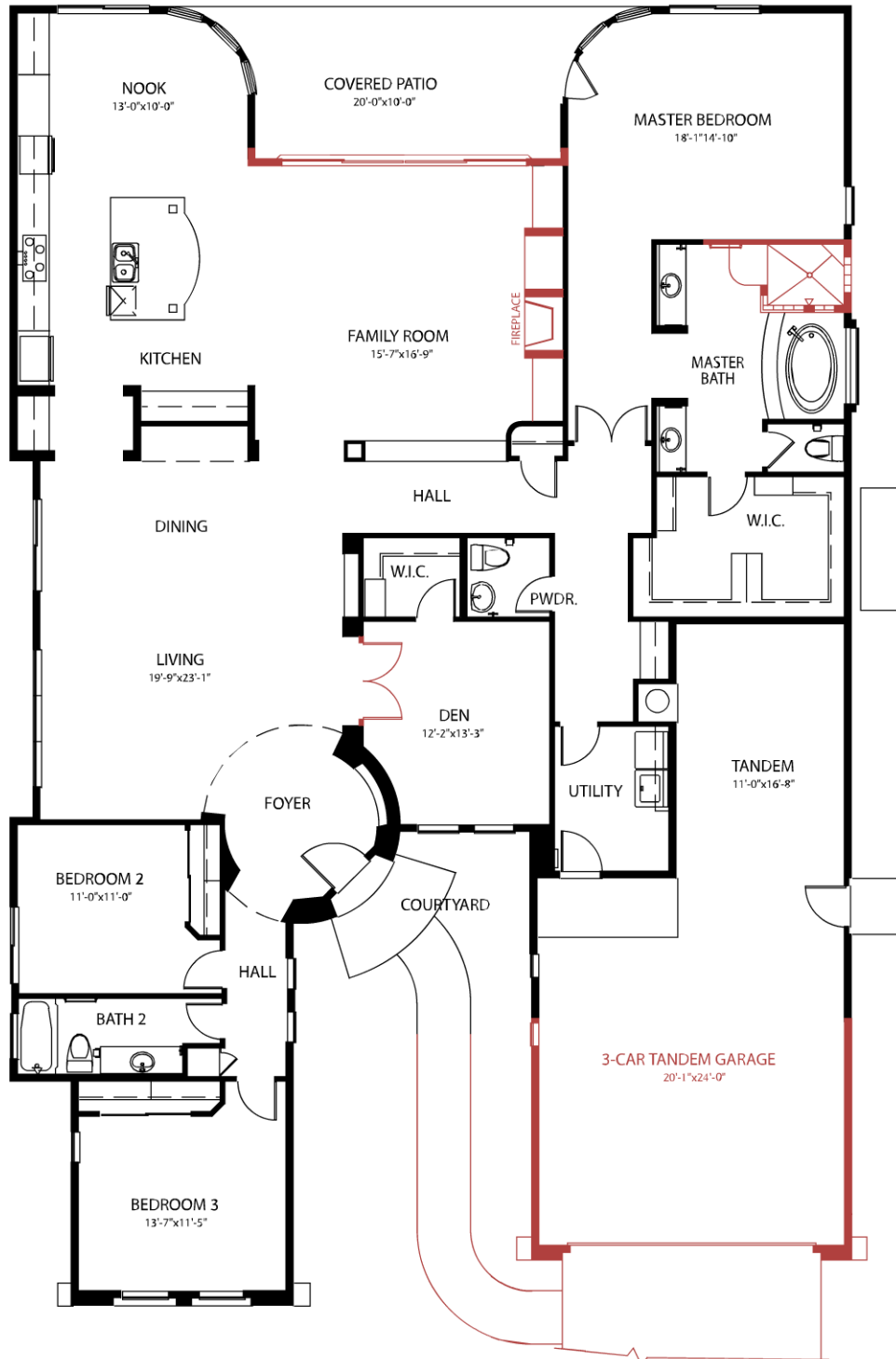
WWW.TWLEWISLUXURY.COM

Christa Cooper

Designated Broker
CELL 480.888.5272 (call or text)
christa@twlewis.com



WL 25 - 3524 S. SOBOBA STREET - 4 BED - 2.5 BATH - 3119 SQ.FT. + POOL



The Willows at Power Ranch • Ph. 480-963-3791



In the continuing effort to improve our homes, builder reserves the right to modify the interior and exterior design, specifications, locations, sizes, design features and prices of the homes. Modifications may vary by home and are subject to change without notice. All dimensions and square footages are approximate. No representations of any type are made by this floor plan. Colors shown are approximate representations of actual materials and are not intended to be an exact color match.