

\$519,900 2329 N. 158th Drive
Goodyear, AZ 85395

FOR SALE

T.W. LEWIS
QUALITY
SINCE
1991



DESCRIPTION

Popular floor plan featuring 5 bedrooms and 4 baths in this single level T.W. Lewis build in the Torremar Community. An open courtyard leads to the foyer opening up to the formal living and dining room with a great view of the custom pool and landscaping in the backyard. The family room is open to the kitchen with an over sized island featuring stainless appliances and granite counter tops. Bedroom 3 features its own bathroom while Bedroom 2 and 4 have close access to their own full baths. Bedroom 5 also can be utilized as an office with a view of the courtyard. The Master Bath features long over sized separate counter tops, snail shower and large walk-in closet. The master bedroom has lots of natural light with its own entrance to the patio..

5 BED | 4 BATH | 3,410 sq. ft.

- Ensuite
- Pool
- Formal living/dining room
- 3 car garage
- Large Lot

MLS#

For video and floor plan, check out our website!

WWW.TWLEWISLUXURY.COM

Christa Cooper

Designated Broker

CELL 480.888.5272 (call or text)

christa@twlewis.com



\$519,900 2329 N. 158th Drive
Goodyear, AZ 85395

FOR SALE

T.W. LEWIS
QUALITY
SINCE
1991

T.W. Lewis Signature Features

Attractive sand stucco exterior finish
2" x 6" exterior walls
Granite kitchen countertops
Gourmet kitchen with natural gas cooktop and large kitchen island
Master Suite with luxurious bath
Tile snail shower in master suite (separate from tub)
Larger secondary bedrooms w/extensive closet shelving
Executive height base boards
Wood window sills
Additional natural light due to larger windows
8' interior doors
Softened drywall corners
Wide hallways w/architectural niches
Decora rocker light switches
Alarm system
Natural gas heating

Exterior

Pool
No neighbors behind
Garage - Single Direct Home Access
Near Open Space

Kitchen

Stainless Steel Appliances
Built-in Refrigerator
Built-in Microwave
Gas Stove
Breakfast Countertop Bar
Oversized Island With Shelving And Cabinet Storage
Walk-in Pantry
Breakfast Nook
Staggered Height Kitchen Cabinets With Crown Molding

Interior

Two-tone Interior Paint
Tile Floors
Tile Tub Surrounds
Ceiling Fans
Family Room
10 ft. ceilings
Walk-in Master Closet with built-in Shelving
Pre-plumbed for soft water system
2" Wood Blinds
Wood Shutters
Garage Service Door

Key Floorplan Features

Walk-in Master Closet
Built in 2012
Master Bedroom Access to Patio
Family Room
Formal Dining Room
Formal Living Room
Ensuite
Separate Laundry Room
Three-Car Garage

MLS#

For video and floor plan, check out our website!

WWW.TWLEWISLUXURY.COM

Christa Cooper

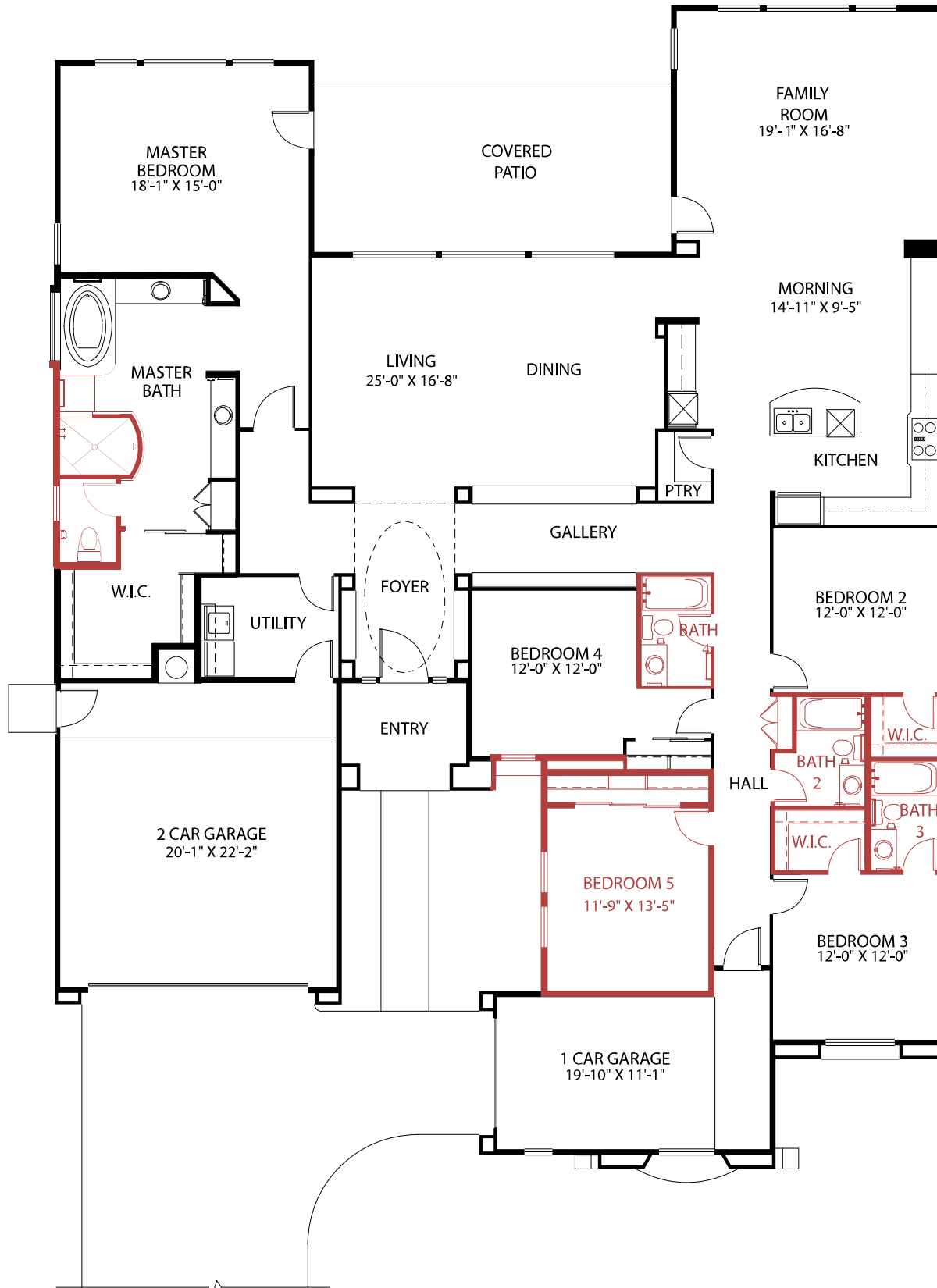
Designated Broker

CELL 480.888.5272 (call or text)

christa@twlewis.com



TM 315 - 2329 N. 158TH DRIVE - 5BED/4BATH/3,410 SQ.FT + POOL



Torreमार • Ph. 623-328-8023



In the continuing effort to improve our homes, builder reserves the right to modify the interior and exterior design, specifications, locations, sizes, design features and prices of the homes. Modifications may vary by home and are subject to change without notice. All dimensions and square footages are approximate. No representations of any type are made by this floor plan. Colors shown are approximate representations of actual materials and are not intended to be an exact color match.