

FOR SALE

\$599,900

CHRISTA
COOPER 
CC REAL ESTATE COMPANY

5330 S. BIG HORN PLACE, CHANDLER, AZ 85249



DESCRIPTION

Gorgeous T.W. Lewis build in the gated community of Valencia. Located on a large lot with no neighbors behind this house is the one. A large courtyard greets you past the wrought iron entry gates. The formal living and dining room feature coffered ceilings and large windows to the backyard. The master bedroom has separate sinks, snail shower with block glass and large walk-in closet. The family room has a stone work fireplace with the perfect spot for a flat screen TV. The kitchen features a morning room, large island, granite counter tops and stainless steel appliances. The backyard features a gorgeous pool and landscaping.

4 BED | 3 BATH | 3,469 sq. ft.

- LARGE LOT
- FORMAL LIVING/DINING
- POOL
- FIREPLACE

MLS#

FLOOR PLAN ON BACK

For more information, check out our website!

WWW.CHRISTACOOPER.COM



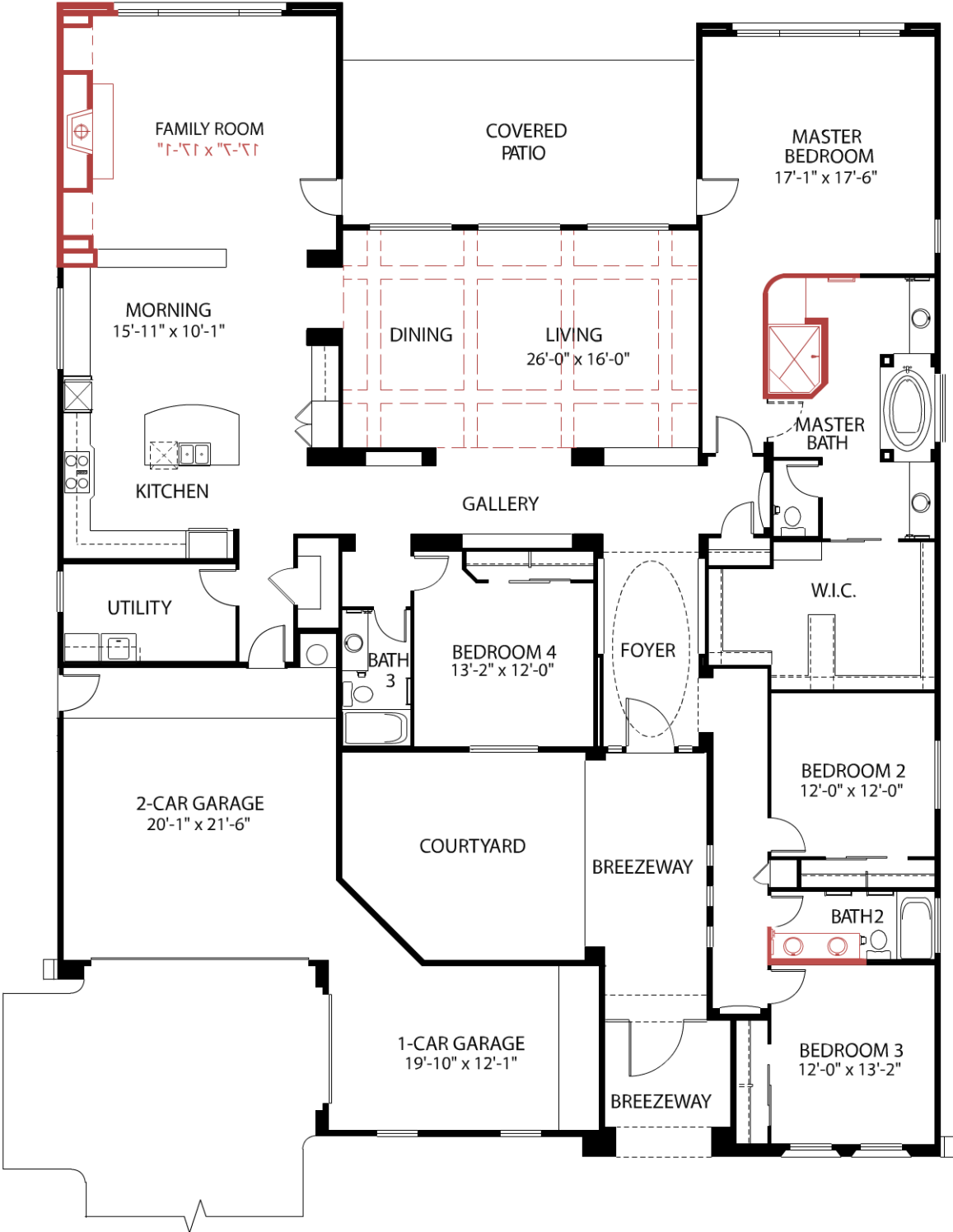
CHRISTA COOPER

Owner/Designated Broker
CC Real Estate Company

480.888.5272 call/text

cc@christacooper.com

MB 319 ~ 5330 S. BIG HORN PLACE - 4 BED/3 BATH/3469 S.F. + POOL



Marbella at Valencia • Ph. 480-629-4690



In the continuing effort to improve our homes, builder reserves the right to modify the interior and exterior design, specifications, locations, sizes, design features and prices of the homes. Modifications may vary by home and are subject to change without notice. All dimensions and square footages are approximate. No representations of any type are made by this floor plan. Colors shown are approximate representations of actual materials and are not intended to be an exact color match.

FOR SALE

\$599,900

CHRISTA
COOPER 
CC REAL ESTATE COMPANY

5330 S. BIG HORN PLACE, CHANDLER, AZ 85249

T.W. Lewis Signature Features

Attractive sand stucco exterior finish
2" x 6" exterior walls
Granite kitchen countertops
Gourmet kitchen with natural gas cooktop and large kitchen island
Master Suite with luxurious bath
Tile snail shower in master suite (separate from tub)
Larger secondary bedrooms w/extensive closet shelving
Executive height base boards
Wood window sills
Additional natural light due to larger windows
8' interior doors
Softened drywall corners
Wide hallways w/architectural niches
Decora rocker light switches
Alarm system
Natural gas heating

Exterior

Stone Accent
Courtyard With Wrought Iron Gate
Courtyard With Fireplace
Pool
No neighbors behind
Garage - Single Direct Home Access
Near Open Space

Kitchen

Stainless Steel Appliances
Built-in Refrigerator
Built-in Microwave
Gas Stove
Butler Area
Breakfast Countertop Bar
Oversized Island With Shelving And Cabinet Storage
Walk-in Pantry
Breakfast Nook
Built-in Desk
Staggered Height Kitchen Cabinets With Crown Molding

Interior

Under-cabinet Kitchen Lighting
Two-tone Interior Paint
Pendant Lighting
New Carpet
Tile Floors
Interior Natural Gas Fireplace
Tile Tub Surrounds
Ceiling Fans
Family Room
10 ft. ceilings
Walk-in Master Closet with built-in Shelving
Pre-plumbed for soft water system
2" Wood Blinds
Wood Shutters
Garage Service Door

MLS#

FLOOR PLAN ON BACK

For more information, check out our website!

WWW.CHRISTACOOPER.COM



CHRISTA COOPER

Owner/Designated Broker
CC Real Estate Company

480.888.5272 call/text
cc@christacooper.com